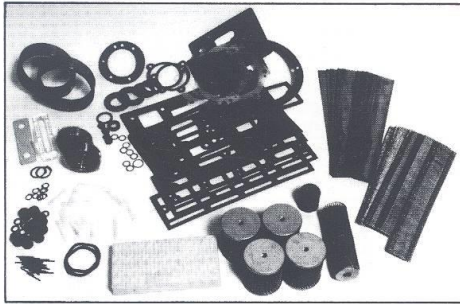
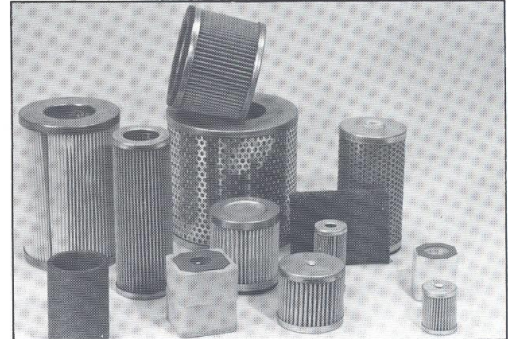


J.A.S. GRAPHICS, INC ■

Rebuild Kit

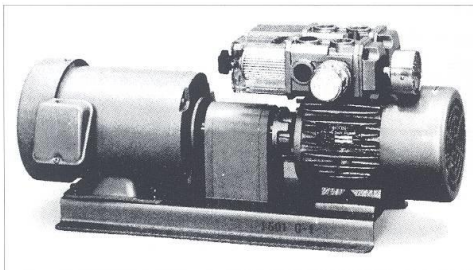


Filters and Silencers

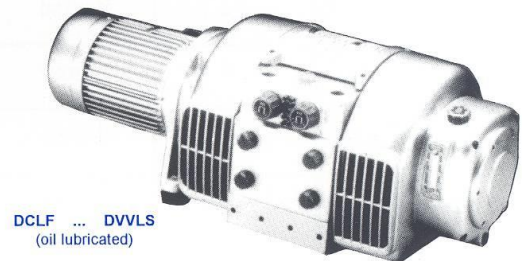


We sell vacuum pumps,
parts, supplies, and filters.

We offer Vacuum Pump Rebuild Exchange:
Complete Rebuilding of the pumps, gaskets,
seals, bearings, vanes, carrier rings,
rehoning filters, etc... and includes a full
one year warranty on parts and labor.



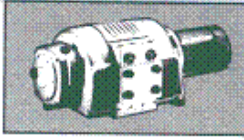
Orion
Becker
Werie-Rietschle



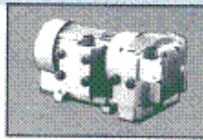
DCLF ... DVLS
(oil lubricated)

J.A.S. GRAPHICS, Inc

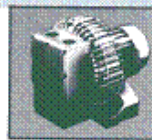
DCLF...DVVLS



TR...DV
TR...DVV (similar)



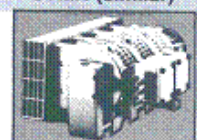
SKG



SKK



SMH
SVMK (similar)



RIETSCHLE model	60 Hz motor size in KW	rebuild kit number	exploded drawing number	service sheet number	filter/silencer (s) replacement number	filter qty
SKK 334 03(07)*	1.7	E03033	E516	B540	315541 (s) 315542 (s)	1 1
SKK 382 03(11)*	4.8	E03034	E514	B540	315606 (s)	2
SMH 330 22(3K)*	9.0	E03146	E691	B691	730515 313323 (s)	2 3
SMK 334 03	8.5	E03155	E529	B528	730519 (s)	5
SVMK 300-3	13.0	E03156	E690	B690	730515 (s) 313323 (s)	2 6

Above: All motors are three phase, 230/460 Volt, 3450 RPM. Other motor sizes and electrical requirements available upon request. Not available without motors.

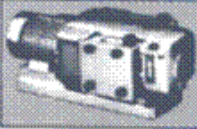
* External filters available upon request (above and on opposite page).

TR 25 DV (67)	1.3 P	E03024	E426	B424	730504 730506 515339 315193 (s)	1 1 1 1
TR 26 DV (70)	1.3 P	E03139	E426	B424	730504 730506 515339 315193 (s)	1 1 1 1
TR 40 DV (66)	2.4 P	E03023	E426	B424	730524 515340 315193 (s)	2 1 1
TR 41 DV (70)	2.4 P	E03150	E426	B424	730524 515340 315193 (s)	2 1 1
TR 60 DV (67)	3.6 P	E03101	E426	B424	730508 515411 315049 (s)	2 1 1
TR 61 DV (70)	3.6 P	E03120	E426	B424	730508 515411 315049 (s)	2 1 1
TR 80 DV (67)	4.8 P	E03149	E426	B424	730508 515310 315049 (s)	2 1 1
TR 81 DV (70)	4.8 P	E03121	E426	B424	730508 515310 315049 (s)	2 1 1
TR 41 DVV (70)	2.4 P	E03150	E426	B424	730524 515340 315193 (s)	2 1 1
TR 60 DVV (64)	3.6 P	E03022	E427	B427	730508 515411 315049 (s)	2 1 1
TR 61 DVV (70)	3.6 P	E03151	E427	B427	730508 515411 315049 (s)	2 1 1
TR 80 DVV (64)	4.8 P	E03021	E427	B427	730508 515310 315049 (s)	2 1 1
TR 81 DVV (70)	4.8 P	E03152	E427	B427	730508 515310 315049 (s)	2 1 1

Above: All motors are three phase, 230/460 Volt, 1700 RPM. Other motor sizes and electrical requirements available upon request. Not available without motors. P= pipe cooled.

J.A.S. GRAPHICS, Inc

CL...DV
CL...DVVL (similar)



CLFG...V



CLFT...DV



DCLF...DV



RIETSCHLE model	60 Hz motor size in KW	rebuild kit number	exploded drawing number	service sheet number	filter/silencer (s) replacement number	filter qty
CL 25 DV	1.3	E03006	E402	LN206	730501	7
CL 40 DV	1.8	E03007	E402	LN206	730501 730504 730506	1 2 2
CL 60 DV	2.6	E03008	E402	LN206	730501 730504 730506	1 2 2
CL 40 DVVL	1.8	E03009	E405	LN206	730501 730506	2 3
CL 60 DVVL	2.6	E03010	E405	LN206	730501 730506	2 3
CLFG 41 V	1.3	E03002	E101	B101	730506	2
CLFT 41 DV	2.6	E03028	E422	B423	730502 730505 730524	2 2 2
CLFT 61 DV	3.6	E03027	E423	B423	730502 730507 730524	2 2 2
CLFT 81 DV	4.8	E03026	E423	B423	730505 730507 730524	2 2 2
CLFT 101 DV	6.6	E03025	E423	B423	730502 730505 730507 730524	1 2 2 2
CLFT 141 DV	9.0	E03154	E423	B423	730502 730505 730507 730524	1 2 3 3
DCLF 40 DV	2.6	E03011	E401	LN306	730502 730507	2 1
DCLF 60 DV	3.6	E03012	E401	LN306	730502 730507	4 1
DCLF 80 DV	4.8	E03013	E401	LN306	730502 730505 730507	2 2 2
DCLF 100 DV	6.5	E03014	E401	LN306	730505 730507 730508	2 1 2
DCLF 130 DV	9.0	E03015	E401	LN306	730505 730508	2 4
DCLF 60 DVVLS	3.6	E03016	E403	LN306	730502 730507	4 2
DCLF 80 DVVLS	4.8	E03017	E403	LN306	730502 730505 730507	2 2 2
DCLF 130 DVVLS	9.0	E03018	E403	LN306	730505 730508 313322 (s)	2 4 1

Above: All motors are three phase, 230/460 Volt, 1700 RPM. Other motor sizes and electrical requirements available upon request.

SKG 200 2V	.66	E03029	E520	B540	307436 (s) 307437 (s)	1 1
SKG 230 2V	.65	E03030	E520	B540	307438 (s) 307439 (s)	1 1
SKG 250 2V	1.3	E03031	E520	B540	307440 (s) 307441 (s)	1 1
SKG 275 2V	2.6	E03032	E520	B540	307440 (s) 307441 (s)	1 1
SKGS 200-2'	.65	E03153	E501	B540	307436 (s) 307437 (s)	1 1